

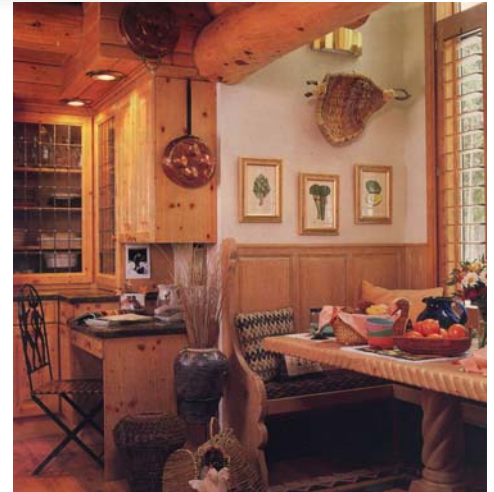
The Paffrath Residence

featured in:



Country goes West

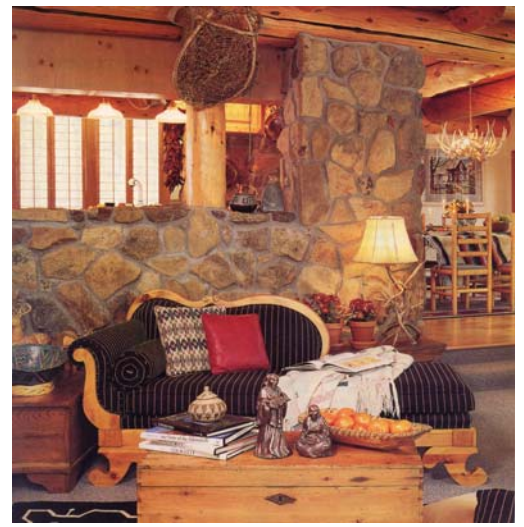
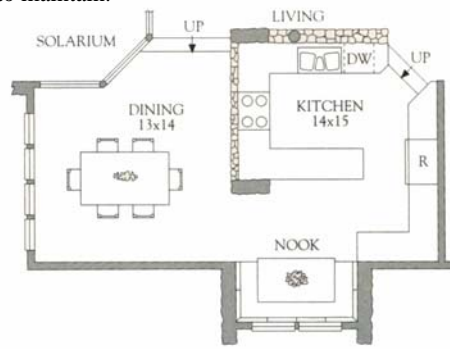
Located two steps up from the adjoining living room, this kitchen offers views of surrounding rooms as well as the ski slopes and mountains outside. Wide-plank floors and a stone wall and arch enhance the kitchen's warm country flavor.



This kitchen's open plan enables the cook to keep up with family activities in adjoining spaces.

HOW THIS PLAN WORKS

- Ample counter space on both sides of a U-shape floor plan and a generous floor area provide enough room for two cooks.
- Granite countertops are durable and easy to maintain.
- Lots of recessed fixtures above the range and countertops guarantee good illumination.
- A central location within the house, few walls, and minimal overhead cabinets lend an open feel and make it easy to communicate with family and friends in adjoining areas.
- A separate breakfast nook and dining area flank the work core.



“Jeff wanted something really rustic and was pushing for an all-log house,” recalls architect Jon Gunson. “Jean was hoping for something a little more refined.” By combining rustic Western elements with country French features, the couple got just the look they wanted: a style Jean labels as “country goes West.”

